



**Schools Cash Office**  
Income Administration Software

# **Epson printer TM-T88IV and TM-T88V installation guide**



**Tucasi Ltd** Wessex House Upper Market Street Eastleigh Hampshire SO50 9FD  
0844 800 4017 [www.tucasi.com](http://www.tucasi.com)

Copyright Tucasi Ltd 2004 - 2015

# CONTENTS

1.	ABOUT THIS DOCUMENT .....	2
2.	INSTALLING AND CONFIGURING THE PRINTER .....	2
2.1.	<i>Installing the printer</i> .....	2
2.2.	<i>Testing the receipt printer</i> .....	9
2.3.	<i>Configuring the default settings</i> .....	9
3.	TROUBLESHOOTING .....	10
4.	SUPPORT .....	10

## 1. About this document

Thank you for purchasing the Epson receipt printer for use with Schools Cash Office (SCO) version 2.4. This document describes how to install the Epson TM-T88IV or TM-T88V receipt printers.

**Check the label on your receipt printer to confirm the make and model prior to commencing the installation.**

The Epson receipt printer can only be connected to one PC; it cannot be configured to be used as a networked printer with Schools Cash Office.

Please do not plug in the receipt printer until instructed to do so.


## 2. Installing and configuring the printer

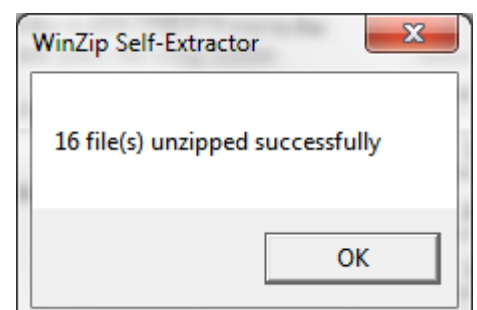
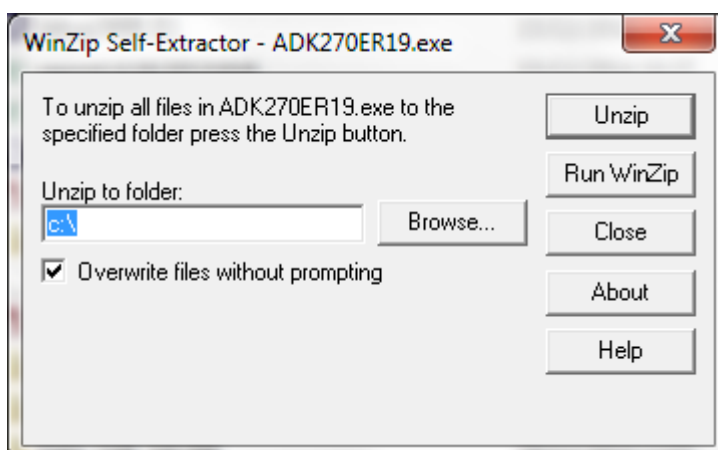
**IMPORTANT:** Do **NOT** plug in or turn on the power to the printer yet as this will trigger Windows to search for and install incorrect drivers.

### 2.1. Installing the printer

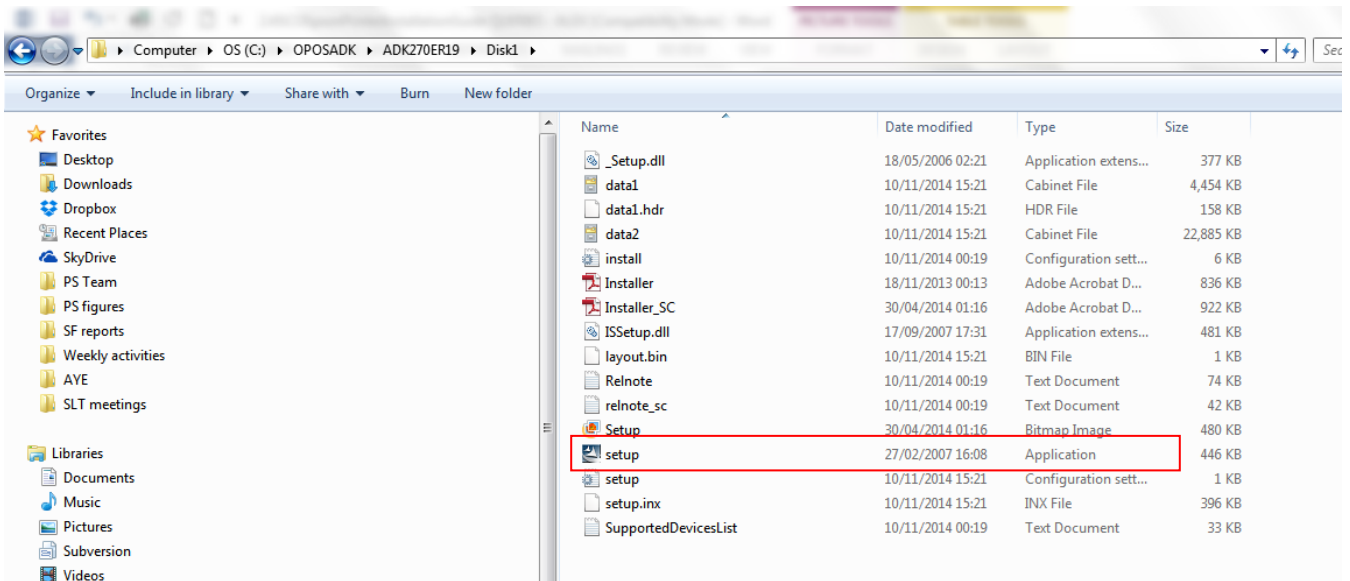
- Log on to Windows as a user with **Administrator** privileges.
- On your PC, load the Internet and go to the Epson download page:

[https://download.epson-biz.com/modules/pos/index.php?page=single\\_soft&cid=4249&scat=38&pcat=3](https://download.epson-biz.com/modules/pos/index.php?page=single_soft&cid=4249&scat=38&pcat=3)

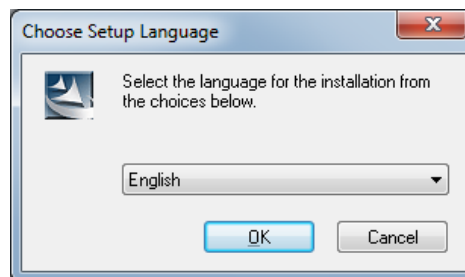
- Scroll to the bottom of the page, read the online software licence agreement and tick '**Accept**'
- Click on  to download the **Epson receipt printer drivers**.
- Double click on the zipped **ADK270ER19.exe** file.
- Click on **Run**.
- Click on **Unzip**.



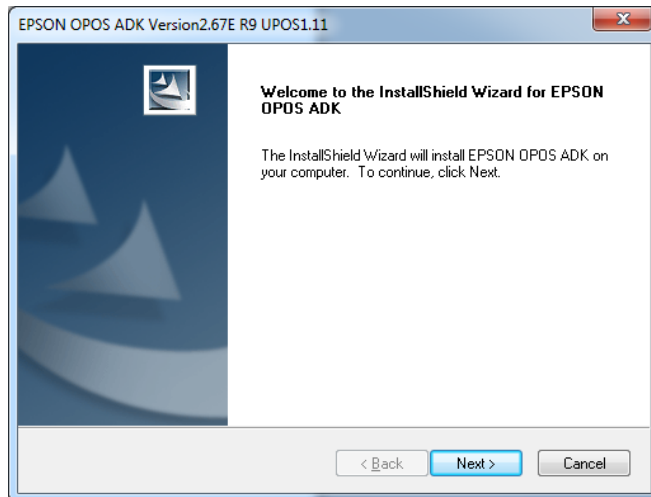
- Click on **OK**.
- Click on **Close**.
- Start **My Computer** and browse to the Local Disk (**C:**) drive.
- Double-click on **OPOSADK**.
- Double-click on **ADK270ER19**.
- Double-click on **Disk1**.
- Double click on the **setup.exe**.



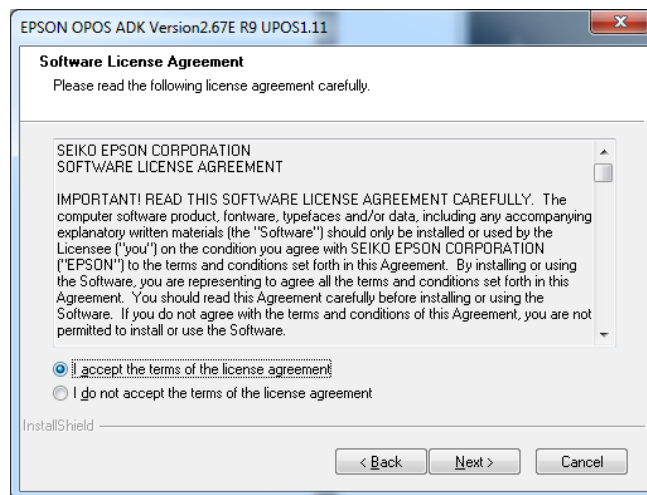
- Select the **English** language.



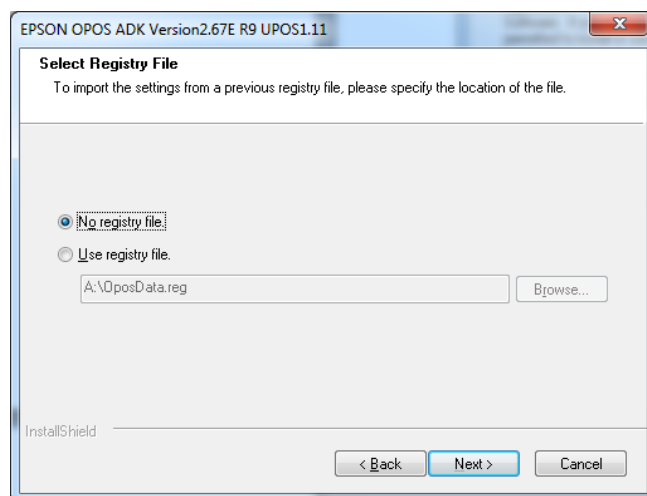
- Click **OK**.
- Click **Next**.



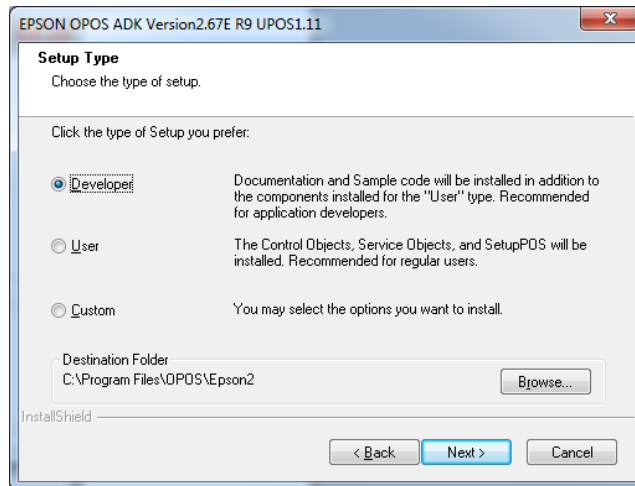
- Read the License Agreement and select **I accept the terms of the license agreement.**



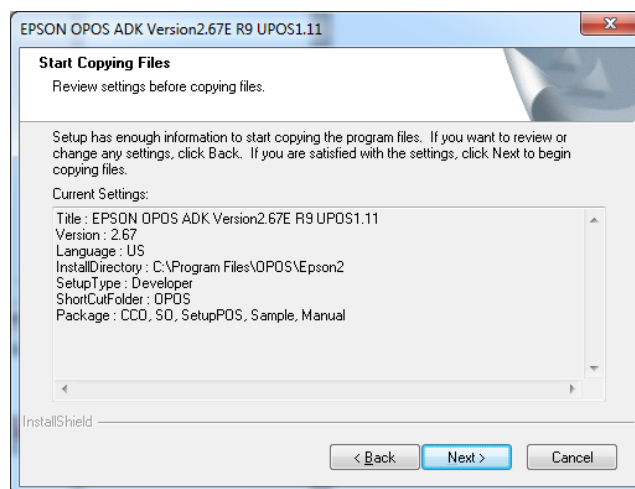
- Click on **Next.**
- Select **No registry file.**



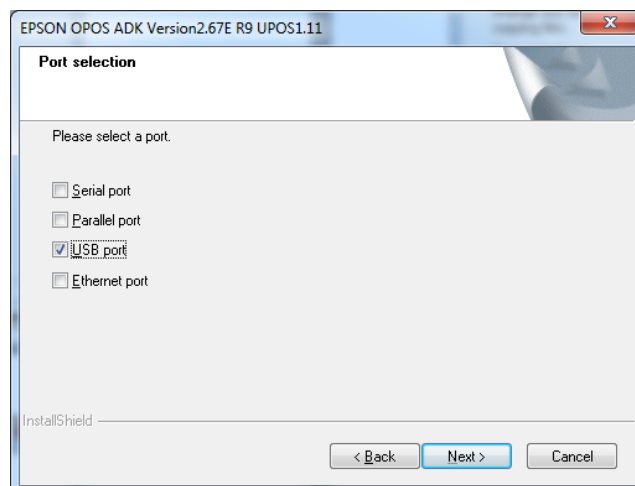
- Click on **Next.**
- Select **Developer** and click on **Next.**



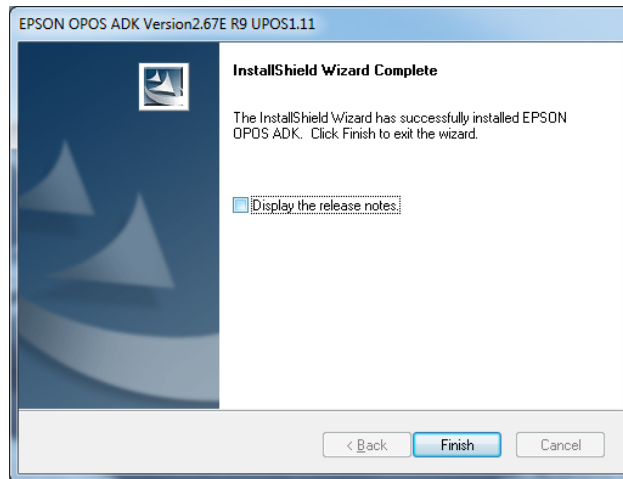
- Click on **Next**.



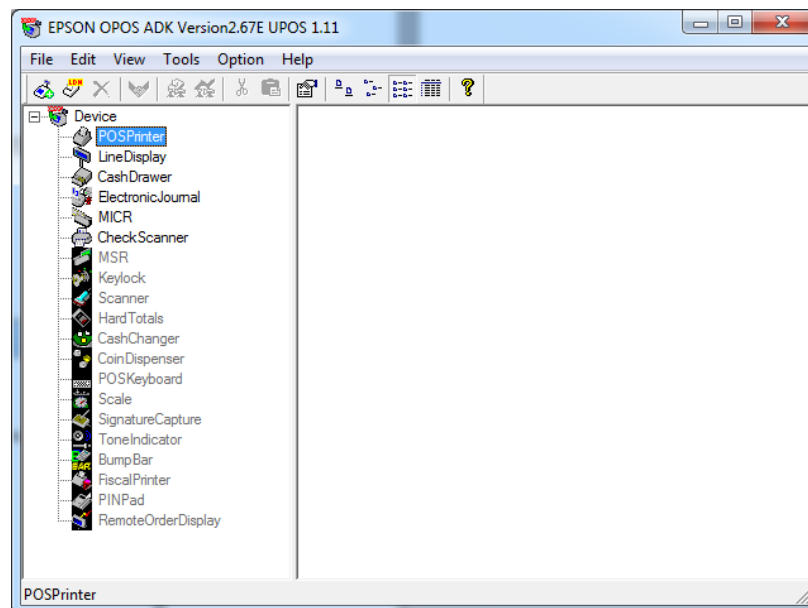
- Untick **Serial port** and tick **USB port**.



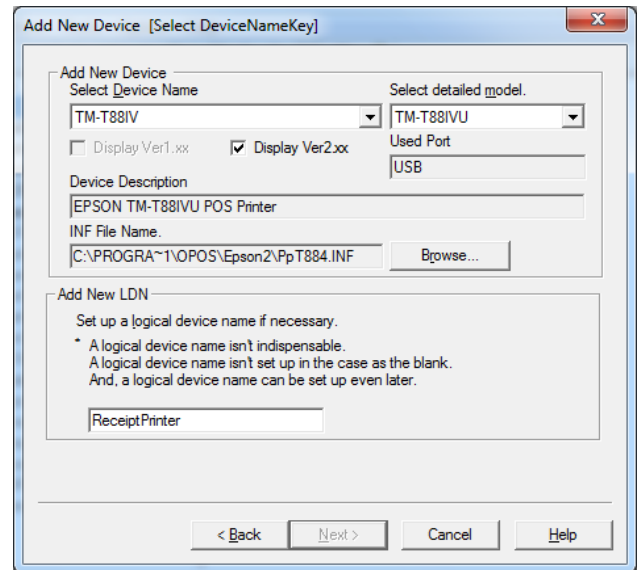
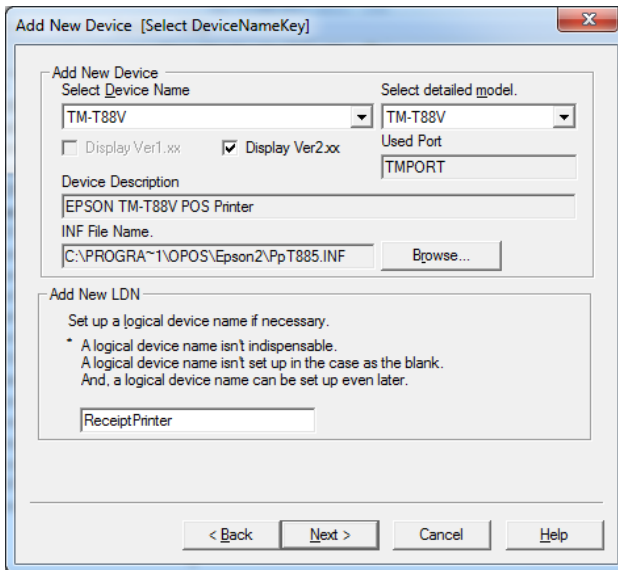
- Click on **Next**.
- Wait for the driver to install – the window may disappear at this point. Wait for the next window to display.
- Untick **Display the release notes**.



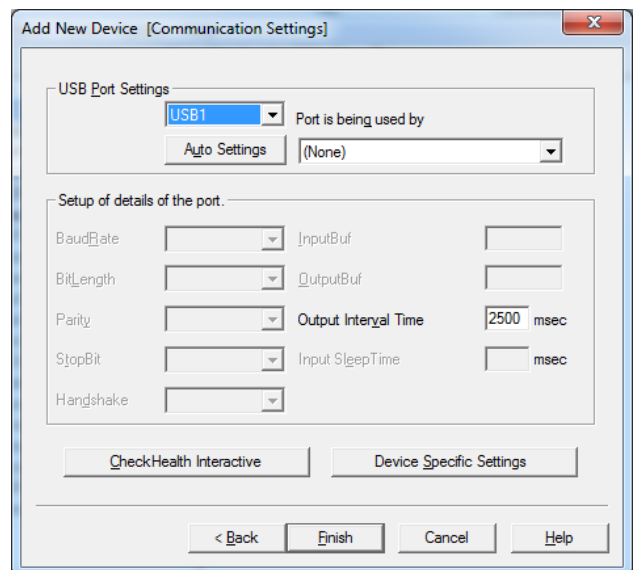
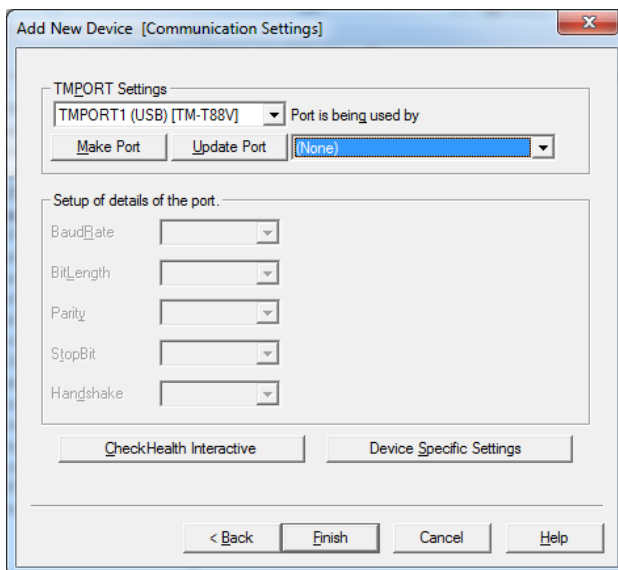
- Click on **Finish**.
- Connect the **USB cable** from the printer to your PC.
- Connect the **power cable** from the printer to the electrical supply.
- Insert the **till roll**.
- **Switch the printer on**.
- In the Epson control panel **right-click** on **POS printer** and choose **Add New Device**.



- Select the matching **Device Name** and **detailed model (TM-T88IV or TM-T88V)**.
- Enter **ReceiptPrinter** as the LDN and ensure it matches the text below **exactly** (i.e. capital **R** and **P** without any spaces).

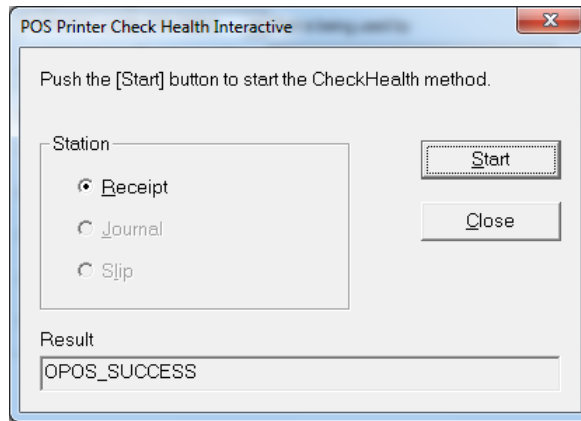


- Click on **Next**.
- Ensure the relevant **TMPORT Settings** are displayed to match your printer.

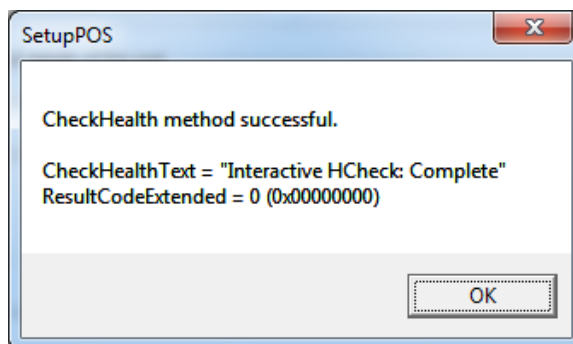


- Click on **CheckHealth Interactive**.
- Click on **Start**.





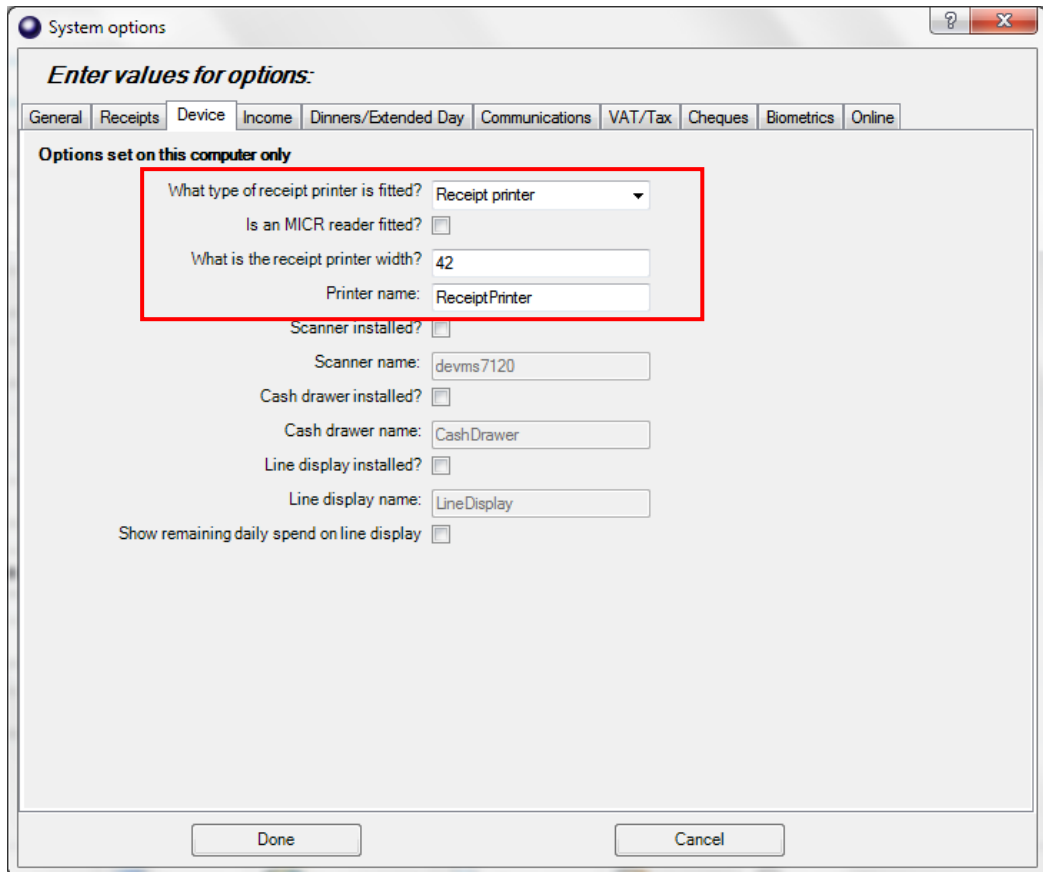
- The **Result** should display **OPOS\_SUCCESS** if installed correctly.
- Click on **Close**.



- Click on **OK**.
- Click on **Finish**.
- **Close** the Epson Control Panel and **close** the Browser window.

#### Start **Schools Cash Office**.

- Log on with the Administrator user name and password (or log on with another configured SCO user).
- On the **Configuration** screen, select **System options**.
- Click on the **Device** tab.
- Ensure the settings match those in the image displayed below.



- Click on **Done**.

---

## 2.2. Testing the receipt printer

If you are already using Schools Cash Office, test the receipt printer as follows:-

- **Restart** Schools Cash Office.
- On the **Audit** screen, select **Income and expenditure log**.
- Click on a transaction.
- Click on **Print**.

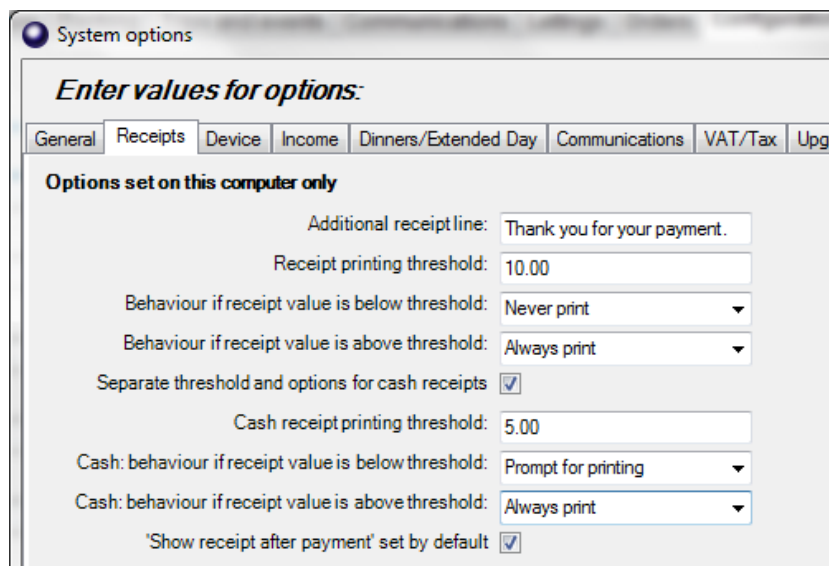
For new users, the receipt printer can be tested once the first transaction has been entered.

---

## 2.3. Configuring the default settings

The settings displayed below can be configured on this PC.

- On the **Configuration** screen, select **System options**.
- Click on the **Receipts** tab.



### 3. Troubleshooting

If the receipt printer does not print, refer to the FAQ on our website: on the Tucasi website [www.tucasi.com](http://www.tucasi.com), click on the link to **Support**, select **Frequently Asked Questions** and select **FAQ1002 - My Epson receipt printer isn't working**

(or go direct to <http://www.tucasi.com/faq1002>).

#### Printing to an A4 printer

In the absence of an Epson receipt printer, to set up Schools Cash Office to print to an A4 printer, refer to the FAQ on our website: on the Tucasi website [www.tucasi.com](http://www.tucasi.com), click on the link to **Support**, select **Frequently Asked Questions** and select **FAQ1031 - I do not have a receipt printer. How can I set up Schools Cash Office to print to my A4 printer?**

(or go direct to <http://www.tucasi.com/faq1031>).

### 4. Support

If you have any queries when installing the Epson receipt printer, please contact:

Tucasi Customer Support  
Email: [support@tucasi.com](mailto:support@tucasi.com)  
Tel: 0844 800 4017